



Complete Lake Management Supplies

2015 Retail Catalog

About Us

Aquatic Control® began managing aquatic resources in 1966. From the beginning Aquatic Control® saw the need to protect and preserve our water resources. Various aquatic resource management options were developed: lake management services including aquatic vegetation management, fisheries management and water quality enhancement; diffused and floating aeration system design, installation and maintenance; decorative fountain installation and maintenance; and Do-It-Yourself pond management program development. Our staff includes fisheries biologists, aquatic biologists, factory trained fountain specialists, licensed applicators, aquatic technicians and knowledgeable customer service representatives.

Our lake management staff will work with you to develop the best management plan for your aquatic resource. Through the years Aquatic Control® has taken pride in maintaining the highest level of environmental stewardship in our products and services. Lakes and ponds are dynamic resources that are consistently changing. We work with individuals and property managers in developing an environmentally sustainable approach to aquatic vegetation management. Our goal is to provide the most healthy water resource possible in every situation. This goal is achieved by evaluating all aquatic management options, developing a management plan, implementing that plan, evaluating results and making adjustments to the plan to achieve sustainable solutions.

Aquatic Control® is a distributor of lake management supplies, floating fountain aerators, and diffused aeration systems throughout the Midwest. This direct business relationship with manufacturers provides opportunity for product registration updates and new product development. We also maintain a working relationship with state regulators, state fish and wildlife agencies, federal regulatory and research agencies as well as college and university researchers. Aquatic Control® is a member of the Aquatic Plant Management Society (APMS), Midwest Plant Management Society (MAPMS), North American Lake Management Society (NALMS), American Fisheries Society (AFS), Aquatic Ecosystems Restoration Foundation (AERF) and Responsible Industry for a Sound Environment (RISE) along with regional and state chapters of these organizations. This aquatic industry involvement affords real-time product development and regulatory news updates which allows us the opportunity to implement current best management practices in every facet of our aquatic resource management business. Aquatic Control® is a certified WBE business by the state of Indiana.



Leah Rust-Essex
CEO/Owner



David Isaacs
President



Carol Hayden
Controller



Nathan Long
Vice President
Lake Management
Services



Casey Reed
Vice President
Aeration



Matthew Johnson
Vice President
Sales & Marketing



Michael Whitacre
Manager
Missouri Office



Steve Lee
Manager
Northern Indiana
Office



Adam Charlton
Manager
Kentucky Office



Patrick Whitson
Manager
Southwest Indiana
Office



Michael Johnson
Equipment
Manager

Welcome to our 2015 Products & Services Catalog



SERVICE

Friendly and knowledgeable customer sales staff to answer your calls. Technical support available at 800-753-5253 or sales@aquaticcontrol.com. Quick solutions to most pond management questions. Same day shipping on most orders.

SELECTION

Let our staff of biologists take the guess work out of pond management. With proper plant identification we can develop a management plan to meet your needs. In search of aeration, we can walk you through the design and installation process.



SUCCESS!



TABLE OF CONTENTS

Management Supplies.....	2
Diffused Aeration Equipment.....	12
Floating Aerators & Fountains	14
Do-It-Yourself Form	21
Management Services	22

5 EASY WAYS TO REACH US



P.O. Box 100
Seymour, IN
47274



Phone:
800-753-5253



Fax:
812-497-2460



Email:
sales@aquaticcontrol.com



Website:
aquaticcontrol.com



Cutrine Plus

Is a 27.9% copper ethanolamine complex chelated algaecide (9% metallic copper equivalent) for lakes, potable water reservoirs, farm ponds, fish ponds, industrial ponds, fish hatcheries, crop and non-crop irrigation systems, ditches, canals, and laterals.

Effective in controlling Chara, Spirogyra, Cladophora, Vaucheria, Ulothrix, Microcystis, and Oscillatoria. Effective in hard water. Treated water may be used for swimming, fishing, drinking, livestock watering, or irrigation immediately after treatment. Application rates range from 0.6 to 1.2 gal per acre foot of water.

Product#	Container	Price	Qty. Price
L00120	1 gallon	\$43.59	\$41.41/4+
L00146	2.5 gallon	\$102.50	\$97.38/2+



Cutrine Plus Granular

3.7% granular chelated copper algaecide for treatment of bottom growing algae including Chara and Nitella and spot treatments along docks, beaches, boat

launches, and fishing areas. This formulation helps control growth before it reaches the surface. Spread as evenly as possible over treatment area. Application rates range from 20 to 90 pounds per acre based on plant height and plant species.

Product#	Container	Price	Qty. Price
L00137	12 lb	\$46.80	\$45.84/4+
L00140	30 lb	\$102.90	\$100.80/2+



Cutrine Ultra

Is used for hard-to-control algae. This chelated algaecide contains a non-ionic surfactant to provide enhanced penetration of cellular walls to provide improved control.

Treated water may be used for swimming, fishing, drinking, livestock watering, or irrigation immediately following application of Cutrine Ultra.

Product#	Container	Price	Qty. Price
L00147	2.5 gallon	\$119.93	\$113.93/2+



Captain

Is a 28.2% copper ethanolamine complex chelated algaecide (9.1% metallic copper equivalent) for potable water reservoirs, farm ponds, fish, and fire ponds, lakes, and fish hatcheries.

Effective control of planktonic algae, including: Anabaena, Aphanizomenon, and Microcystis; filamentous algae, including: Spirogyra, Cladophora, Rhizoclonium, and Hydrodictyon; and branched algae, including: Chara and Nitella. Application rates range from 0.6 to 1.2 gal per acre foot of water treated.

Product#	Container	Price	Qty. Price
L00206	1 gallon	\$51.96	\$49.36/4+
L00209	2.5 gallon	\$115.63	\$109.85/2+



Captain XTR

Is for broad spectrum control of tough algal species. This chelated algaecide contains unique surfactants optimized to enhance penetration of the copper into algae with colonial growth assemblages, protective sheaths and/or mucilaginous

coatings to provide improved control. Captain XTR is formulated to have a high affinity for algae and improved cell penetration. Water treated with Captain XTR may be used for drinking, swimming, fishing, watering livestock and for irrigation crops, turf, fairways, putting greens and ornamental plants immediately following treatment.

Product#	Container	Price	Qty. Price
L00152	2.5 gallon	\$135.68	\$128.90/2+



K-Tea

Is a 12.9% copper hydroxide chelated algaecide (8% metallic copper equivalent) for slow moving or quiescent bodies of water including: golf course, irrigation, and fire ponds; fresh water lakes and fish hatcheries; potable water reservoirs and crop

and non-crop irrigation systems. Effective against planktonic, filamentous, and branched green algae as well as blue-green algae, diatoms, and protozoans. Effective in hard water. No restrictions on water usage following application at recommended rates. Application rates range from 0.68 to 3.4 gal per acre foot of water treated.

Product#	Container	Price	Qty. Price
L00185	2.5 gallon	\$113.30	\$107.65/2+



Filamentous Algae



Oscillatoria Algae



Brendan Hastie
Seymour Office
Biologist/Applicator



Chris Jordan
Seymour Office
Applicator



Mark Sharp
Sales Associate



Joey Leach
Seymour Office
Biologist/Applicator



Brian Isaacs
Sales Specialist



Kalee Alberring
Customer Sales
Specialist



GreenClean Granular

A peroxide based, organic algaecide works on contact to control all types of algae in ponds, water gardens, fountains

and other water features. GreenClean does not harm fish, or other aquatic life. GreenClean immediately begins fighting algae blooms, releasing vital oxygen into the water body as it biodegrades. Application rates range from 30 to 170 lbs per acre foot of water. There are no restrictions for water use following application.

Product#	Container	Price	Qty. Price
L00167	2 lb	\$23.02	\$21.86/12+
L00168	8 lb	\$49.76	\$47.28/4+
L00173	50 lb	\$219.50	\$208.50/3+



GreenCleanPRO

A professional strength peroxide based algaecide that eliminates algae on contact. Designed for use in lakes, ponds and other large bodies of water. Its active ingredient, sodium carbonate peroxyhydrate, creates a powerful oxidation reaction that

destroys algal cell membranes and chlorophyll, providing immediate control of algae. Fast acting, it leaves behind no harmful residues. When used at labeled rates, GreenCleanPRO will not harm fish (including sensitive fish such as rainbow trout), plants, or aquatic life. GreenCleanPRO is labeled for up to 90 lbs per acre foot of water. NSF/ANSI Standard 60 certified for drinking water applications. OMRI listed.

Product#	Container	Price	Qty. Price
L00172	50 lb	\$132.50	\$125.50/3+



Algimycin-PWF

Is a chelate of copper gluconate and copper citrate liquid algaecide (5% metallic copper equivalent) which controls algae and cyanobacteria in potable reservoirs, ponds, lakes, irrigation systems, ditches, canals, and laterals.

NSF approved. Water may be used immediately after treatment for swimming, fishing, livestock watering and irrigation. Application rates range from 0.32 to 2.66 gal per acre foot of water for planktonic and filamentous algae, and 2.3 to 3.19 gal per acre foot of water for Chara and Nitella.

Product#	Container	Price	Qty. Price
L00116	2.5 gallon	\$88.78	\$85.23/2+



Phycomycin SCP

Granular algaecide and oxidizer primarily targets offensive blue-green algae in lakes, ponds, canals, aquaculture, wastewater and drinking water reservoirs. The 85% active concentrated form of Sodium Carbonate Peroxyhydrate

is 100% soluble in water forming hydrogen peroxide. Target algae are rapidly killed and dissolved oxygen is released into the water column. Phycomycin SCP algaecide has a high margin of safety for fish (including copper sensitive species) and other non-target organisms at application rates required to control algae. Dosage rates from 3.0 to 100 lbs per acre foot of water depending on the severity of growth and species present. Available in 50 lb foil-lined bags. Phycomycin SCP algaecide is certified by the National Sanitation Foundation (NSF) for use in drinking water supplies.

Product#	Container	Price	Qty. Price
L00805	50 lb	\$126.00	\$120.00/3+



SeClear

Is the first algaecide and water quality enhancer in-one designed to replace routine algaecide programs. This product is 16.2% copper sulfate pentahydrate (4.1% metallic copper equivalent). Routine applications of SeClear provide effective control of a broad-range of

algae species while reducing in-water phosphorus levels with each application. The result is algae control, improved water quality and aesthetics with reduced maintenance through time. Water treated with SeClear may be used for drinking, swimming, fishing, watering livestock and for irrigating crops, turf, fairways, putting greens and ornamental plants immediately following treatment. Available Spring 2015 SeClear E2 can be applied as granule or dissolved and sprayed - CALL FOR PRICING.

Product#	Container	Price	Qty. Price
L00803	1 gallon	\$38.05	\$36.15/4+
L00807	2.5 gallon	\$61.00	\$57.95/2+



Stocktrine

1.25% chelated copper algaecide for use in small ponds, tanks, and troughs for control of filamentous and planktonic algae. Popular for use in small decorative pools. Easy to calculate and measure appropriate amount of material to

be used in small volumes of water. Dosage rate is one ounce per 250 gallons. May be toxic to some ornamental fish.

Product#	Container	Price	Qty. Price
L00640	1 quart	\$16.37	\$15.55/12+



Copper Sulfate

Is 99% copper sulfate pentahydrate (25.1% copper as metallic), a compound used for years as an algaecide. Effective against all forms of algae including: filamentous, planktonic, and branched algae. Crystal form is most effective on bottom mats while the fine crystal may be easily spread or dissolved in water. Copper sulfate is less effective in hard water than chelated copper products. This product is corrosive to metal equipment and toxic to fish in soft water. Normal application rate is 2.7 lbs per acre foot of water treated. Effective for control of swimmers itch with special application methods. No restrictions on water usage following application.



Product#	Container	Price	Qty. Price
L00101	5 lb (crystal)	\$24.40	\$23.95/6+
L00102	15 lb (crystal)	\$70.95	\$69.90/3+
L00095	50 lb (fine)	\$134.00	\$129.50/2+
L00100	50 lb (medium)	\$157.50	\$154.00/2+



PAK 27

Is the original peroxygen algaecide. This effective and environmentally compatible algaecide provides selective control of cyanobacteria/blue-green algae at low use rates and broad-spectrum algae control at higher use rates. Waters treated with

PAK 27 can be used during and after application for swimming, fishing, drinking, and irrigation. Please read and follow all label use instructions. PAK 27 is NSF/ANSI Standard 60 Certified for use in drinking water supplies.

Product#	Container	Price	Qty. Price
L00897	50 lb	\$149.50	\$142.00/3+



Reward

A concentrated liquid aquatic herbicide effective against a wide variety of submersed, emergent, and floating aquatic plants including duckweed, naiads, and cattails. Reward poses virtually no environmental risk in aquatic applications because the

herbicide concentration rapidly decreases as it is absorbed into soil, vegetation, and organic matter. Restrictions on water usage following application: livestock consumption - 1 day, irrigation of food crops - 5 days, irrigation of turf and non-food crops - 1-3 days, human drinking - 1-3 days. Application rates: 1 to 2 gallons per surface acre.

Product#	Container	Price	Qty. Price
L00275	1 gallon	\$113.05	\$108.53/4+
L00280	2.5 gallon	\$197.50	



Galleon SC

A systemic aquatic herbicide for the selective control of floating, submersed, and emergent aquatic vegetation. Contains 2 lb penoxsulam, an aquatic herbicide that inhibits the acetolactate synthase (ALS) enzyme in susceptible plants. For use in managing selected aquatic

plants including: Eurasian watermilfoil, curlyleaf pondweed, sago pondweed, Brazilian elodea, cabomba, duckweed, and watermeal. Provides selective control with proper concentrations, timing, and application techniques. Use rates from 2 - 5.6 ounces per acre for emergent control and 5 to 150 ppb for in-water applications. Field testing in the Midwest has shown good control of watermeal in ponds where Sonar AS failed to give acceptable control. Economical and selective control of curlyleaf pondweed with early spring application of whole lake low concentration.

Product#	Container	Price
L00950	1 quart	\$588.43



Sonar RTU

Is an effective product for successful do-it-yourself weed control for ponds. Sonar RTU is a Ready-To-Use formula that controls duckweed, milfoil, hydrilla, coontail and lilies in smaller bodies of water. The Sonar RTU treatment program includes 3 treatments: initial, day 21 and day 42. Based on a ¼ acre pond with

a 4 foot average depth, the initial application would be one quart of Sonar RTU. No mixing, no need for spray equipment or a boat—simply apply directly into the water from the shoreline. This treatment would be followed up with ½ quart Day 21, and ½ quart Day 42. Sonar RTU is so effective and simple to use, the results are guaranteed. We're so sure that applications of Sonar RTU conducted according to directions will control target aquatic vegetation listed on the label that we'll work with you until you see the results you expect. Sonar RTU programs should be initiated in February through the end of June for optimal results. We will work with you in developing the best treatment time-line for your pond.

Product#	Container	Price	Qty. Price
L00373	1 quart	\$98.85	\$91.44/4+



Aquathol K

A liquid concentrate herbicide effective against a broad range of aquatic plants with a wide margin of safety to fish and other aquatic life. Aquathol K may be used in quiescent or slow moving waters and flowing water systems.

Do not apply before weeds are present. For best results, water temperature should be 50 degrees Fahrenheit or higher. Aquathol K treated water may be used for swimming, fishing, livestock watering and irrigating turf, ornamental plants, and crops with few exceptions (please refer to the label). Application rates range from 0.45 to 3.2 gal per acre foot of water treated.

Product#	Container	Price	Qty. Price
L00036	1 gallon	\$117.93	\$112.03/4+
L00035	2.5 gallon	\$253.65	\$241.28/2+



Sonar

An aquatic herbicide effective against a variety of aquatic plants; submersed, emergent, and floating (including duckweed & watermeal). Provides excellent season-long control with spring application prior to or just after plant growth begins. No

restrictions on water use for fishing, swimming, or domestic use following application according to label instructions. 7 to 30 day restriction on use of treated water for irrigation following application.

Sonar AS
Application rates: ponds - 0.16 to 1.5 quarts per acre, lakes - 0.11 to 4 quarts per acre.

Product#	Container	Price	Qty. Price
L00344	8 ounce	\$241.66	\$236.82/6+
L00345	1 pint	\$419.57	\$411.18/6+
L00350	1 quart	\$763.70	\$748.42/6+
L00355	1 gallon	\$2,124.75	

Sonar Granular Products
Application rates: ponds - 3.2 to 25 pounds per acre, lakes - 4 to 80 pounds per acre.

Product#	Container	Price
L00360	40 lb SRP	\$1,346.40
L00364	30 lb PR	\$1,165.50
L00366	8 lb Q	\$334.32
L00362	40 lb Q	\$1,287.60
L00371	20 lb One	\$704.00



Sonar Genesis

Is the latest formulation innovation resulting in faster plant knock-down and better control. This ½ lb formulation is easier to use, measure and rinse. Waters treated with Sonar Genesis can be used during and after application for swimming,

fishing, drinking and irrigation when label conditions are followed.

Product#	Container	Price
L00376	1 gallon	\$297.99



Aquathol Super K

A concentrated granular herbicide effective against a broad range of aquatic plants with a wide margin of safety to fish and other aquatic life. The Super K pellets are manufactured in a manner which provides an essentially

dust free material for easier application. The more concentrated formulation reduces the amount of material needed. Super K treated water may be used for swimming, fishing, livestock watering and irrigating turf, ornamental plants, and crops with few exceptions (please refer to the label). Application rates range from 3.3 to 22 lbs per acre foot of water treated.

Product#	Container	Price	Qty. Price
L00047	10 lb	\$321.30	\$305.20/4+
L00046	20 lb	\$540.00	\$513.00/2+



Weedtrine D

A non-volatile herbicide for use in controlling submersed and floating aquatic weeds. It is also recommended for top-kill of shoreline emergent weeds and as a grass and broadleaf weed growth killer in non-crop or nonplanted areas. Absorption and herbicidal action of Weedtrine D is usually quite rapid with effects visible in a few days. Application rates are 5-10 gallons per surface acre. Water should not be used for irrigation or domestic use for 5 days following treatment.

Product#	Container	Price	Qty. Price
L00395	1 gallon	\$63.54	\$62.27/4+



Renovate 3

A systemic aquatic herbicide used for control of certain submersed, floating, and emergent aquatic plant species including woody plants, in ponds, lakes, reservoirs, and marshes. Additional treatment sites include

adjacent banks, shores, canal banks and non-irrigation canals which have little or no continuous outflow. Renovate 3 is an effective herbicide for watermilfoil, purple loosestrife, and other "broadleaved" aquatic species. Renovate 3 will not harm "monocot" species such as cattails and grasses.

Product#	Container	Price	Qty. Price
L00277	1 quart	\$69.57	\$66.23/12+
L00278	2.5 gallon	\$273.05	



Renovate OTF

(On-Target Flake) is a granular form of Renovate, a liquid systemic herbicide. OTF is perfect for spot treating Eurasian watermilfoil along beaches or around docks. Renovate OTF is also the better formulation for deep water applications.

Product#	Container	Price
L00273	10 lb	\$93.00
L00274	40 lb	\$160.40



Navigate

A granular formulation of 2,4-D which is effective on watermilfoil, water stargrass, coontail, spatterdock, water lilies, and watershield. It is very effective in control of Eurasian watermilfoil, an aggressive, exotic species found throughout the U.S. This

product is not for use in waters used for irrigation, agricultural sprays, watering dairy animals, or domestic water supplies. Suspension of water use for irrigation and domestic use based on testing for residual. (See Label) Application rates vary from 28-56 pounds per acre foot.

Product#	Container	Price	Qty. Price
L00403	50 lb	\$209.00	\$205.00/2+



Sculpin G

A granular formulation of 2,4-D amine for selective control of broadleaf aquatic plants. The first granular formulation of 2,4-D amine herbicide for aquatic plant control. Amine formulation not affected by high pH water. Primary target

vegetation is watermilfoil. No swimming or fishing restrictions. May be used near potable water and irrigation intakes with suitable setback and monitoring of in-water concentration.

Product#	Container	Price
L00860	40 lb	\$98.00



DMA4 IVM

An amine formulation of 2,4-D containing 46.3% (3.8 lb) active ingredient per gallon. DMA4 IVM provides general aquatic weed control for susceptible emergent species, primarily broadleaf plants, and also controls brush,

and bulrushes. DMA4 IVM is labeled for the control of watermilfoil. Mix 2 to 4 quarts of DMA4 IVM plus aquatic surfactant and drift control agent with 50-100 gallons of water per surface acre of foliage. For small areas use 2 ounces per gallon of water in sprayer.

Product#	Container	Price	Qty. Price
L00438	2.5 gallon	\$90.75	\$86.25/2+



Renovate Max G

An advanced technology breakthrough for selective systemic control of broadleaf aquatic weeds. A patented granular formulation of a combination of triclopyr and 2,4-D amine for control of susceptible aquatic plants.

Use rates from 0.25 ppm (4.7 lbs/acft) to 5.0 ppm (93.7 lbs/acft). Highly susceptible plants include Eurasian and hybrid watermilfoil; moderately susceptible plants include northern watermilfoil, bladderwort, white water lily and watershield. Other plants with susceptibility to higher rates include variable-leaf milfoil, water stargrass, parrotsfeather, spatterdock, water chestnut and coontail.

Product#	Container	Price
L00870	40 lb	\$134.00



Nautique

An effective copper based aquatic herbicide that is used to control hydrilla, naiads, Brazilian elodea, widgeon grass, milfoil, sago pondweed, and horned pondweed. Nautique aquatic herbicide may be used in lakes,

ponds, potable water reservoirs, ornamental ponds, golf course water hazards, fire ponds, and industrial retention basins. Water may be used immediately after treatment for swimming, fishing, livestock watering, and irrigation. Application rates range from 1.8 to 3.0 gallons per acre foot of water treated.

Product#	Container	Price	Qty. Price
L00212	1 gallon	\$70.74	\$67.20/4+
L00208	2.5 gallon	\$95.55	



Komeen

A copper based aquatic herbicide effective on hydrilla, elodea, coontail, naiads, and some pondweeds. Komeen may be used in slow moving or quiescent bodies of water including: golf course, ornamental fish, and fire ponds; fresh water lakes, fish hatcheries, irrigation systems

and potable water reservoirs. This product remains effective in hard water. Areas treated with Komeen may be used for fishing, swimming, irrigation, or watering livestock immediately after treatment. Application rates range from 1.7 to 3.4 gallons per acre foot of water treated.

Product#	Container	Price	Qty. Price
L00189	1 gallon	\$59.54	\$56.56/4+
L00190	2.5 gallon	\$76.38	



Komeen Crystal

Is the most advanced granular copper-based herbicide developed for aquatic plant management. This high load formulation allows for low use rates and improved control of nuisance and invasive aquatic weeds in deep water or high flow

sites. Komeen Crystal is the chelated granular solution for targeted treatments of Hydrilla, Vallisneria and other susceptible species with no water use restrictions following application.

Product#	Container	Price
L00193	20 lb	\$246.40



Clearigate

A chelated copper formulation containing an emulsified surfactant/penetrant for highly effective control of coarse (thick cell-walled) filamentous algae, muscilaginous (colonial) planktonic algae, Chara

and a variety of emergent, floating, and submerged aquatic plants. Vegetation controlled includes: Cladophora, Pithophora, Lyngbya, Microcystis, Hydrilla, pondweeds, watermilfoil, naiad, and other species having a sensitivity to copper absorption in conjunction with a penetrant. Application rates vary from 0.9 to 8.7 gallons per acre foot. There are no restrictions for water use following application.

Product#	Container	Price
L00800	5 gallon	\$231.15



Clearcast

Is an effective solution for selective aquatic and terrestrial weed control with minimal irrigation restrictions. It can be applied directly to water for the control of certain submerged aquatic vegetation or applied as a broadcast or spot spray

to floating and emergent vegetation. Weeds controlled include alligatorweed, cattail, common salvinia, frogbit, phragmites, pennywort, primrose, spatterdock, water hyacinth, water lily, watershield and more. Clearcast can also be applied during drawdown or to non-cropland sites for terrestrial and riparian vegetation control. Application rates range from 500 ppb for in-water treatments to 5% solution in foliar applications.

Product#	Container	Price	Qty. Price
L00940	1 gallon	\$277.14	\$275.88/2+



ShoreKlear-Plus

Is a systemic herbicide for use on emerged aquatic weeds and brush in aquatic and other non-crop sites. ShoreKlear Plus contains a surfactant. ShoreKlear-Plus is effective on many species including: alligator weed, cattails, reed canary grass, purple loosestrife, American

lotus, phragmites, spatterdock, torpedo grass, water hyacinth, water lettuce, water primrose, and willows. Application rates normally range from 3.5 - 4.5 ounces per gallon of water. Please refer to specific plant treatment rates on the label.

Product#	Container	Price	Qty. Price
L00734	1 gallon	\$34.21	\$32.57/4+



Hydrothol 191

This concentrated aquatic herbicide-algaecide is effective against a wide variety of submersed aquatic weeds and alga. Application rates range from: (liquid)- 0.6 pints to 6.8 gallons per acre-foot; (granular)- 3 up

to 270 lbs. per acre-foot of water. Due to fish toxicity, use rates above 0.4 gallons per acre-foot (0.3 ppm) are recommended for commercial applicators only. Normal granular application rates for spot treatment of submersed weeds is 12 lbs. per 1,000 sq. ft. with 4 ft. avg. depth. Hydrothol treated water may be used for swimming, fishing, livestock watering and irrigating turf, ornamental plants, and crops with few exceptions (please refer to the label).

Product#	Container	Price	Qty. Price
L00178	20 lb	\$99.20	\$94.20/2+
L00180	2.5 gallon	\$277.00	\$263.18/2+



Habitat

Application of Habitat herbicide can only be made by federal or state agencies, or those applicators that are licensed or certified as aquatic pest control applicators and are authorized by the state or local

government. Applications may only be made for the control of undesirable emergent and floating aquatic vegetation in and around standing and flowing water, including estuarine and marine sites. Applications can be made to control undesirable wetland and terrestrial vegetation growing in or around surface water when applications may result in inadvertent application to surface water. The use of a non-ionic surfactant is required with the use of Habitat.

Product#	Container	Price	Qty. Price
L00174	2.5 gallon	\$380.00	\$372.50/2+



Refuge

A systemic, non-selective herbicide effective against more than 170 annual and perennial grass and broadleaf weeds and unwanted woody shrubs and trees. This liquid glyphosate formulation provides the highest concentration of glyphosate on

the market. The higher concentration means less storage and transport space and reduced impact on the environment with reduced packaging. Refuge is labeled for use on aquatic and wetland sites, forestry, railroad, utility and other vegetation management sites. Normal application rates range from 0.8 to 1.6 oz per gallon of water. See specimen label for specific plant target rates.

Product#	Container	Price	Qty. Price
L00855	2.5 gallon	\$109.25	\$107.08/2+



Shore-Klear

A concentrated systemic herbicide effective against a variety of emerged aquatic weeds and brush in aquatic and other noncrop sites. Shore-Klear may be used to control alligator weed, cattails, reed canary grass, purple loosestrife, American

lotus, phragmites, spatterdock, torpedo grass, water hyacinth, water lettuce, water primrose, and willows. Application rates normally range from 1-2 oz per gallon of water. Please refer to specific plant treatment rates on the label. This product must be used with a non-ionic surfactant..

Product#	Container	Price	Qty. Price
L00732	1 quart	\$24.02	\$22.87/12+



Stingray

Is a contact aquatic herbicide for the management of floating and submersed aquatic weeds, including: water hyacinth, water lettuce, giant salvinia, Eurasian watermilfoil, variable-leaf watermilfoil and others. Stingray provides fast-acting injury to

susceptible weed species. Stingray may be used in combination with other systemic herbicides such as AquaPro or Galleon for foliar applications of floating species. Restrictions on water usage vary based on the percent of the site receiving application and application rates.

Product#	Container	Price	Qty. Price
L00970	1 quart	\$161.18	\$159.57/6+
L00971	2.5 gallon	\$1,401.60	



AquaPro

A concentrated systemic herbicide effective against a variety of emergent aquatic and terrestrial grasses, broadleaf weeds, brush, and cattails in and around aquatic sites. Application rates for AquaPro usually range from 1 - 2 oz per gallon of water. For specific

plant rates, please refer to the label. This product must be used with a non-ionic surfactant approved for the application site.

Product#	Container	Price	Qty. Price
L00729	1 quart	\$37.43	\$35.63/12+
L00730	1 gallon	\$71.02	\$69.60/4+
L00731	2.5 gallon	\$112.43	\$110.20/2+



Aquashade

A lake dye registered by E.P.A. for control of aquatic plant growth in impounded bodies of water with limited or no outflow. Aquashade is a unique blend of blue and yellow dyes specifically designed to screen or shade portions of the sunlight spectrum required by

underwater plant and algae growth. This shading inhibits photosynthesis in young, bottom growth suppressing growth and development of nuisance conditions. Aquashade can be used in place of, or as a companion to, registered aquatic herbicides and algaecides in managing aquatic nuisance growth. For best results, apply before growing season starts, or when growth is on the bottom. Application rate: 20 oz - 80 oz per 1 acre foot of water.

Product#	Container	Price	Qty. Price
L00020	1 gallon	\$51.49	\$49.58/4+
L00023	2.5 gallon	\$119.83	\$115.28/2+



Aquatic Blue

Lake and Pond Dye is an organic water dye for use in ponds, lakes, decorative water features, golf course water hazards, and impounded bodies of water with limited or no outflow. Aquatic Blue improves the appearance of surface water by turning waters a

bright blue. Aquatic Blue may be poured directly into the water at several locations to enhance dispersion. Treated water will not harm fish, waterfowl, pets, or wildlife. Water may be used for irrigation or fishing immediately. Apply Aquatic Blue at a rate of 0.25 gal per acre foot of water. This product should not be applied directly into drinking water.

Product#	Container	Price	Qty. Price
L00033	1 gallon	\$36.23	\$34.78/4+



Blue Springs PLUS

Is a concentrated lake and pond colorant used to aesthetically tint water a pleasing blue. Once applied to lakes, ponds, or other decorative water features and dispersed water may be used immediately for swimming, fishing, and irrigation. This product is easy

to apply by pouring around the edges of the water feature, disperses within hours, and will not harm fish, waterfowl, pets, or wildlife when applied at recommended dosage rates. Blue Springs Plus should be applied at a rate of 8-13 oz per acre foot of water. This product should not be applied directly into drinking water.

Product#	Container	Price	Qty. Price
L00028	1 quart	\$30.78	\$29.55/12+



Aquashadow

Lake and pond colorant in water soluble packets provides a safe and convenient way to beautify your water feature. Simply toss in one of the 7.15 oz packets

and let nature do the rest. The blended dye is gradually released from the dissolving packet and disperses evenly leaving a pleasant aqua-blue cast that highlights your water for a picture perfect landscape. One packet treats 326,000 gallons (equivalent to a 1/4 acre pond which is 4 feet deep). Aquashadow is packaged 4 water soluble packets to a carton.

Product#	Container	Price	Qty. Price
L00021	4 pack carton	\$57.98	\$56.24/4+



SePRO Blue

Water soluble blend of dyes that dissolve quickly to give your pond a natural blue to aquamarine color. For easy application, simply remove the outer packaging and toss the water-soluble packets into the water. The packets will dissolve on their own while spreading the dye for you. Each packet will treat

1 acre of water at a depth of 1 foot. SePRO Blue has no use restrictions, so water can be used immediately after treatment for fishing, swimming, irrigating or domestic use.

Product#	Container	Price	Qty. Price
L00358	5.25 ounce packet	\$15.76	\$15.29/16+



Aquashadow Black

Is a new option for changing the appearance of your lake or pond. This liquid concentrated black pond dye is formulated to turn your pond a reflective black color and is becoming a more popular option for those that do not like the aesthetics of a blue pond. The

dosage rate varies depending on desired color but recommended rates are 8-16 ounces per acre foot of water and can be applied by pouring around the edges of the lake or pond. This product should not be applied to drinking water sources. Once this product is dispersed it is safe for swimming, fishing, irrigation and will not harm fish, pets, or other wildlife when applied at the recommended dosages.

Product#	Container	Price	Qty. Price
L00865	1 gallon	\$65.36	\$62.94/4+



Natural Reflection

Black Lake and Pond Dye – is designed to improve the appearance of murky or shallow ponds and lakes by imparting a natural color. These water-soluble packs are protected by waterproof, foil-lined packages. Natural Reflection will maximize surface

reflectivity, help protect your fish from birds, and hide submerged weeds and algae. This product is not toxic to turfgrass, birds, mammals, fish, or other aquatic species. The application rate of this dye is one water-soluble packet per acre foot of water.

Product#	Container	Price	Qty. Price
L00633	5.25 ounce packet	\$17.78	\$17.25/16+



Aquashadow OA

Is designed for use in smaller water systems. This less concentrated formulation simplifies the calculation and measurement of the correct dose for smaller volumes of water. Use sites range from aquariums to garden ponds and fountains. The eight ounce bottle with measurements on the side make dosing simple at the rate of one ounce per 1000 gallon capacity.

Product#	Container	Price	Qty. Price
L00017	8 ounce	\$9.90	\$9.41/24+



Aqua-Prep

A specific blend of high-quality enzymes with a non-ionic surfactant designed to increase the efficiency of naturally occurring micro-organisms in reducing organic pond sediment ("muck"). Non-ionic surfactant

increases surface area of organic muck by penetrating oils and grease holding muck together enhancing enzyme activity. Enzymes dramatically encourage existing and augmented microbial populations to flourish and digest organic materials. Can tank mix with algacides and herbicides during treatment.

Product#	Container	Price	Qty. Price
L00912	1 quart	\$15.84	\$15.05/12+
L00911	1 gallon	\$47.41	\$45.04/4+
L00910	2.5 gallons	\$109.25	\$103.83/2+



Nutri-Sorb

A blend of twenty different high quality gram negative strains of naturally occurring bacteria designed to augment existing pond bacteria populations to enhance their ability to reduce organic pond

sediment. Gram negative bacteria have a short germination time, little mortality on first budding, and are extremely active compared to gram positive bacteria. All bacteria are DNA tested to confirm strains and verify quality and content. Available in eight ounce water soluble packs in 25 pound pails.

Product#	Container	Price
L00921	25 lb	\$400.25



Revive

Is not an algacide, but rather a natural and ecologically harmless method of impacting sludge and odors that commonly plague ponds and small lakes. Revive

is safe for release into any aquatic environment. Revive can be used with algacides with no adverse effect on the bacteria in Revive. Each bucket of Revive contains 20, eight ounce water soluble packs, for easy application. Initial dose rate is 3 lbs per acre foot with an additional maintenance dose of 2 lbs per acre foot every two weeks as needed.

Product#	Container	Price
L00279	10 lb	\$213.20



Bacti-Klear

Bacti-Klear is comprised of several strains of beneficial bacteria selected for their combined synergistic value and each strains enzymatic activity on leaves and decaying aquatic plants and algae, as well as other organic materials commonly occurring in lake and pond muck. The bacterial blend in Bacti-Klear will provide exceptional organic waste breakdown in both aerobic and anaerobic environments. Organic muck reduction begins within hours, and is variably dependent on

aeration, mixing, water depth, temperature and pH. Application rates for the Bacti-Klear pellets range from 10-20 pounds per surface acre. Bacti-Klear liquid rates range from 1.5-3 gallons per acre foot of water. In both cases the higher rate is an initial dosage and the lower rate is the maintenance rate to be applied every 30-60 days.

Product#	Container	Price	Qty. Price
L00924	1 gallon	\$35.03	\$33.35/4+
L00926	10 lb	\$174.20	\$165.80/4+



OX-2P Dissolved Oxygen Test Kit

This test kit includes everything you need to measure dissolved oxygen levels.

Product#	Price
A00280	\$104.65



FF1A Fish Farming Test Kit

This kit makes it possible to test for alkalinity, carbon dioxide, hardness, ammonia, nitrogen,

dissolved oxygen, pH, and temperature.

Product#	Price
A00290	\$401.70



Phoslock

Is lanthanum-modified clay which rapidly binds to free reactive phosphorus (FRP) permanently removing it from the water column. As Phoslock settles at the sediment-water interface

the lanthanum also binds to the FRP released from the sediment. Phoslock is environmentally compatible and effective over a wide range of water chemistries in ponds, lakes and reservoirs. It is best to consult with an Aquatic Control specialist to review various options of testing to determine the exact dosage needed. A recovery approach can be implemented by applying 1-2 bags per acre foot of water (may need to be repeated if high levels of phosphorus present). Phoslock is not an algacide. If algae are present it is beneficial to do an algacide application to get the algae under control prior to the Phoslock application. Phoslock should be mixed with water and applied as a slurry evenly over the surface of the pond.

Product#	Container	Price
L00961	55 lb	\$255.75

Laboratory Analysis of Environmental Parameters

Basic Water Analysis

Analysis of basic water quality parameters to establish a baseline data set which can be used to better manage your lake... now and for future reference. Parameters included: pH, total alkalinity, ortho-phosphate, and nitrate-nitrogen. Kit contains a clean sample bottle and instructions for collecting the water sample.

Prepaid kit \$54.00/sample.

Product # ENV003.

Turbidity/Nutrient Management Analysis

Includes analysis of selected water quality parameters in Basic Water Analysis along with total phosphorus. Laboratory determination of dosage rates of precipitating compounds for clearing turbid water or precipitating excess phosphorus in the water.

Prepaid kit \$81.50/sample.

Product # ENV005.

Note: Aquatic Control® conducts water quality testing to define problems and manage lakes. Our facility is not an EPA certified laboratory. EPA approved testing methods are used when practical.

SPRAY ADJUVANTS FISH MANAGEMENT



Cide-Kick II

A non-ionic, water soluble, low viscosity, biodegradable wetting agent and activator. Helps break down waxy leaf cuticle for more effective herbicide uptake. Use with AquaPro, Reward, 2,4-D, and other herbicides for spraying emergent vegetation. Mix with

algacides for better control of tough algae species.

Product#	Container	Price	Qty. Price
L00073	1 quart	\$19.46	\$17.52/12+
L00075	1 gallon	\$33.04	\$31.29/4+
L00080	2.5 gallon	\$80.85	\$76.80/2+



Defoamer

Is used to eliminate foaming problems in spray tanks. It can be added directly to spray tank if foam exists or even before adding herbicide, pesticide or wetting agent to prevent foam from developing.

Product#	Container	Price	Qty. Price
L00145	1 quart	\$14.74	\$14.00/12+



SilEnergy

An advanced wetter/spreader/penetrant spray adjuvant that will significantly lower surface tension compared to other spray adjuvants. Contains organo-silicon surfactant for superior wetting characteristics. SilEnergy can be used at a much lower rate than other adjuvants.

Safe to use in agricultural, industrial, and aquatic applications.

Product#	Container	Price	Qty. Price
L00501	1 quart	\$28.02	\$26.62/12+
L00500	1 gallon	\$73.14	\$69.48/4+



Will-O'-The Wisp Bug Lite Fish Feeder

This fish feeder utilizes a different concept in fish feeding. The feeder is placed on a post overhanging the water. A circular

light attracts insects from a large area. Once they come to the feeder, they are pulled into the feeder by a high speed fan. The fan then blows them into the water to feed your fish. Insects are not electrocuted by this unit so fish receive usable food, not charred remains.

Product#	Price
A00120	\$256.25



Texas Hunter Fish Feeders

Engineered with advanced features for optimum performance, Texas Hunter Pro Series Fish Feeders were designed for long-term durability. All feeders are available with adjustable or straight legs, or purchase the Pedestal Mount for the LM135 or LM175 model. The DFT12 Digital Timer, a Texas Hunter exclusive, is a unique feature to the pro series fish feeders. A dual motor system introduces a metered flow of feed into a powerful blower assembly. As a self-cleaning device, the feeder shuts off the feed flow motor prior to turning off the blower, eliminating any feed waste at the base of the feeder. To enhance their low-maintenance features, all Texas Hunter Pro Series Fish Feeders include a 5-year limited warranty on the ultra-reliable DFT12 timer.

Feed Capabilities by Model

Product#	Model	Capacity	Price
LM135	A00510	70lb	\$689.00
LM175	A00511	100lb	\$759.00
LM335	A00513	175lb	\$799.00
LM435	A00512	250lb	\$849.00

Accessories

A00515	2W Solar Charger	\$79.00
A00516	12V Battery	\$22.00
A00517	Pedestal Mount for LM135 or LM175	\$149.00



Jacob Cowherd
Missouri Office
Biologist/Applicator



Jimmy Ferguson
Seymour Office
Biologist/Applicator



Nate Eddy
Seymour Office
Applicator



Joe Day
Missouri Office
Biologist/Applicator



Cody Sunby
Southwest IN Office
Biologist/Applicator



Solo Sprayers

These high-grade polyethylene sprayers feature a large opening for easy filling every time. Sprayers are resistant to chemicals and stress. Spray patterns can be varied using one of four nozzles. Back-Pack model features adjustable hand pump, padded shoulder straps and steel support frame. 2 Gallon model carries a 2 year manufacturer warranty. Replacement parts available for both models.

Product#		Price
LE0118	2 Gallon Sprayer	\$37.62
LE0120	4 Gallon Backpack	\$119.62



Hand Held Ev-N-Spred

A small hand spreader for those small application jobs. This small

hand spreader comes completely assembled and ready to use. Heavy duty construction with rustproof poly components that will not corrode. Spreads an even, uniform pattern. Holds about 6 pounds of material. Light weight makes it easy to use. Adjustable flow of material for controlling application rate. Handy trigger On/Off control. Great for Cutrine Granular and Hydrothol Granular applications. Works well for seed and fertilizer. Five year warranty.

Product#	Price
LE0075	\$17.87



Ev-N-Spred

This commercial duty spreader is designed to give long lasting service. The massive enclosed gears are guaranteed for 2 years. A jumbo 40 pound capacity rust proof hopper has double stainless steel spread pattern adjusting plates and special 3-hole drop system. Broadcast pattern can be accurately controlled from a wide, full open pattern to

very narrow. This model also features infinite flow settings and a positive On/Off control. Wide criss-cross shoulder straps provide operator comfort even when broadcasting heavy materials.

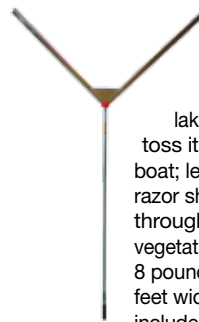
Product#	Price
LE0070	\$143.00



Beachcomber Lake Rake

An excellent tool for removing algae or weeds from lakes and ponds. Also useful in the removal of bottom debris. Frame and 5 1/2 foot handle are made of lightweight aluminum. The rake is 36 inches wide and has twenty-four, 7 inch plastic teeth. Optional floats available for removing floating algae, cut weeds, etc.

Product#	Price
LE0010	\$212.50
LE0020 (floats)	\$23.44



Weed Razer

An effective tool in clearing unwanted aquatic weeds from your lake or pond in minutes. Simply toss it from your dock, shore or boat; let it sink; then pull it in. The razor sharp edges cut effortlessly through most types of aquatic vegetation. The WeedRazer weighs 8 pounds and cuts a path up to 4 feet wide each toss. Package also includes 25 feet of rope and hand

sharpener to maintain stainless steel blade edges. **Weed Razer PRO** features adjustable blades to allow variation in cutting path width. Cut with 7 different angles to match the density and type of vegetation you are cutting. Weed Razer PRO weighs 9 pounds and expands to cut path up to 62 inches wide.

Product#	Price
LE0111 Weed Razer	\$139.00
LE0112 Weed Razer PRO	\$170.00



Weed Raker

The light weight Weed Raker quickly and easily removes vegetation from the surface or from the bottom of your lake or pond. Effective

in clearing swimming or shoreline areas for open water enjoyment. The Weed Raker has a four section handle that snaps together giving you up to 11 feet of reach. It features a 37 inch head and 8 inch high strength composite tines. Weighing less than 7 pounds the Weed Raker can be tossed into the water and retrieved via a 43 foot included rope.

Product#	Price
LE0011	\$124.96



BeachRake

A multipurpose aluminum rake which can be used in water or on land. The BeachRake can be used to remove aquatic vegetation around docks and swimming areas.

It also comes with floatation for the head if you want to remove algae or floating debris from the water. The rounded aluminum teeth feature narrow spacing for grooming beach sand. The handle is 4 sections totaling 11ft in length and also includes a 25 foot section of rope for toss and retrieval for clearing larger areas from shore.

Product#	Price
LE0115	\$109.96



Barbie Huber
Lake Management
Account Specialist



Jarrod Richeson
Northern IN Office
Biologist/Applicator



Zach Arnold
Northern IN Office
Biologist/Applicator



John Cannaday
Northern IN Office
Biologist/Applicator



PondSeal

Is composed of the highest quality Wyoming sodium bentonite – coated over a limestone aggregate core – PondSeal provides precision placement and targeted delivery for reliable swell and an extremely low-permeable seal. Effective both during and after construction – even through standing water. No dusting, dissipation, or product loss (literally sinks “like a stone”). Incredibly durable; structurally stable; all-natural (won’t harm fish). Blanket over porous soils or other suspected problem areas at 5-10 lbs per sq ft. Easily backfill around pipes and control structures (without the need for soil blending or compaction). Create a cut-trench to reinforce compromised dams or earthen berms. Plug unwanted drainage tiles or animal burrows. Use in ponds, lakes, or anywhere that leaks cause a problem. PondSeal is also available in 2400 lb. Super Sacks for large jobs. Please contact us for bulk pricing.

Product#	Container	Price	Qty. Price
L00891	50 lb	\$28.00	\$22.50/48+



Bentonite

A unique type of clay which will swell 12 to 15 times when exposed to water. This unusual property makes it useful as a sealant for seeping ponds, lagoons, etc. Bentonite never permanently sets or hardens. Its flexible, expanding, and self-sealing properties are important advantages when used for water impedance purposes. Available in two grades: Granular - for incorporation with soil and compaction; Chips - for application through water in existing ponds. Application rates range from 2 to 6 pounds of bentonite per square foot of area to be treated.

Product#	Container	Price	Qty. Price
L00053 (granular)	50 lb	\$26.50	\$25.50/10+
L00054 (chips)	50 lb	\$26.50	\$25.50/10+



Septictrine

This combination of natural enzymes is the only septic waste digester that contains all 5 enzymes needed to liquefy all wastes not totally digested by the bacteria in your septic or cesspool system. Flush 2 ounces of Septictrine (per 500 gal tank capacity) down toilet every week until system is working properly. A repeat treatment every other week assures you a non-clogging, trouble-free system. Ecologically accepted and eliminates all odors. Regular use reduces costly tank pumpouts substantially. It effectively restores drainfield percolation, eliminates soggy ground areas, and reduces field glazing. Also for pit toilets and sewage lagoons.

Product#	Container	Price
L00320	5 lb	\$44.50
L00325	10 lb	\$77.50



Water Weeds and Algae Book

The main text of *How to Identify and Control Water Weeds and Algae* provides a comprehensive look at aquatic vegetation problems and control measures. Numerous control alternatives are discussed which highlight the benefits and disadvantages of each method. A detailed section on plant identification includes pictures, written descriptions, distribution maps and recommended controls and alternatives for each. Directions are given for determining size of treatment area, choosing the best product(s) and calculating doses.

Product#	Price
LE0080	\$10.22



Pond Liner

A tough, lightweight, puncture and tear resistant, pond and pit liner, stabilized against harmful

effects of UV light. X-210 is a four layer composite laminate of three layer co-extruded polyolefin film. X-210 is safe for all underwater applications where fish may be in contact with the surface of the polymer. It does not dissolve in water or emit any harmful chemicals into the water. Liners are custom made to your size requirements. Largest single sheet available is 208ft X 208ft. Fabricating Tape and Perma Tape available for attaching to outlet structures, field fabricating of multiple sheets, patching punctures, inserting drain pipes, etc.

Product#	Container	Price	Qty. Price
LE0030	Per sq ft	\$0.67	\$0.59/500+
LE0040	Fab tape	\$40.60	
LE0050	Perma tape	\$60.90	



Away With Geese Light

Is a maintenance-free, solar powered way to get rid of geese. The success of the light is based around a simple concept. At night, geese sleep in or near water areas where they feel secure from their predators (dogs, fox and coyotes). Placing an Away With Geese unit into the secure areas simulates the eye reflection of these predators and disrupts the geese’s ability to sleep. The geese no longer consider the area “safe” and will simply move to another suitable area within a few days.



The unit auto-matically operates at night and produces a solar-powered amber 360 degree beam of light directed at goose eye-level, then recharges itself during the day. Each unit has coverage of 3.5 acres.

Product#	Price
LE0017 Water Unit	\$356.00
LE0018 Land Unit	\$319.00



For lakes up to 1 acre. Suitable for deep lakes. Quiet operation and very low maintenance. Systems include 1/3 HP, 120 volt rocking piston compressor, power cord, thermal overload protection, one diffuser with check valve, marker float assembly and 100 foot of non-weighted or weighted airline.

Product Number	Suggested Pond Size	Voltage	Number Diffusers	Airline Type	Airline Length	Price
LLG1	up to 1 acre	120	1	Non-weighted	100 ft.	\$1,013.52
LLG1W	up to 1 acre	120	1	Weighted	100 ft.	\$1,186.13



For lakes up to 1 acre, maximum depth 18 ft. Systems include 1/4 HP, 120 volt quiet rotary vane compressor, power cord, thermal overload protection, one diffuser with check valve, marker float assembly and 100 foot of non-weighted or weighted airline.

Product Number	Suggested Pond Size	Voltage	Number Diffusers	Airline Type	Airline Length	Price
LLG1V	up to 1 acre	120	1	Non-weighted	100 ft.	\$1,301.85
LLG1VW	up to 1 acre	120	1	Weighted	100 ft.	\$1,474.46

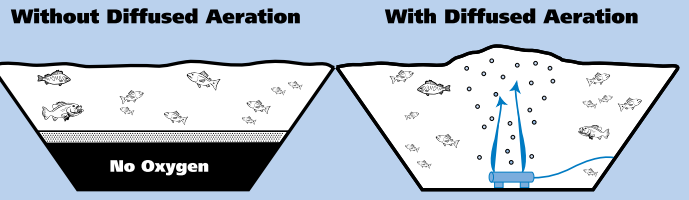


For lakes up to 5 acres, maximum depth 18 ft. Systems include 3/4 HP quiet rotary vane compressor, power cord, thermal overload protection, pressure relief valve and marker float assemblies. Systems available in 120 or 240 volt with non-weighted or weighted airline and from 2 to 4 diffusers with check valves.

Product Number	Suggested Pond Size	Voltage	Number Diffusers	Airline Type	Airline Length	Price
LLG2/LLG2H	up to 3 acres	120/240	2	Non-Weighted	200 ft.	\$1,575.16
LLG2W/LLG2HW	up to 3 acres	120/240	2	Weighted	200 ft.	\$1,905.38
LLG3/LLG3H	up to 4 acres	120/240	3	Non-Weighted	300 ft.	\$1,779.67
LLG3W/LLG3HW	up to 4 acres	120/240	3	Weighted	300 ft.	\$2,275.00
LLG4/LLG4H	up to 5 acres	120/240	4	Non-Weighted	400 ft.	\$1,950.12
LLG4W/LLG4HW	up to 5 acres	120/240	4	Weighted	400 ft.	\$2,644.62

Applications...

- Helps prevent summer or winter fish kill.
- Provides ice free area for waterfowl throughout winter.
- Destratification of lake for maximum utilization by fish.
- Reduce or eliminate problem algae growth.



Lake Life Guard Accessories

Description	Product	Price
Ventilating fan for shelter	LLG570	\$115.92
Additional LLG diffuser with check valve	LLG200	\$95.16
Replacement sheath for diffuser	LLG210	\$27.80
100 ft. Weighted Airline	LLG165	\$222.60
100 ft. roll air tubing	LLG150	\$36.00
400 ft. roll air tubing	LLG160	\$152.00
Maintenance Kit - LLG1V and 300VQ	LLG478	\$128.02
Maintenance Kit - LLG2, 3 & 4; 500VQ, 750VQ, 752VQ, and 754VQ	LLG479	\$152.48
LLG797 Repair Kit for LLG1 or 300R	LLG797	\$81.76
LLG798 Maintenance Kit for LLG1 or 300R	LLG798	\$44.64



Lake Life Guard Premium Compressor Shelter

Durable, ventilated and secure protection for your compressor. Includes 22"L x 24"W x 18"T; all weather shelter with 6" legs, high CFM ventilating fan, 8 airline outports with louvered covers, stainless steel hinge, lid support, hasp with padlock, 120V receptacle and sound dampening compressor mat.

Product#	Voltage	Price
LLG265	120V	\$751.00



Rock Shelter

Is an aesthetically pleasing way to protect your compressor from the elements. These natural looking enclosures are designed for easy installation and include a compressor stand, ventilating fan, screened vent, power cord, and 115 volt receptacle.

Product#	Voltage	Price
LLG255	115V	\$276.00

DIFFUSED AERATION SYSTEMS



Kasco Robust-Aire™

Diffused aeration is an effective method of aeration for ponds with depths greater than 8'. By using compressed air injected directly into the bottom of the pond, a continuous flow of water is moved upward and thousands of gallons of water are mixed with little expended energy. Systems include compressor(s), diffuser(s), keyed and lockable cabinet with cooling fan, and 100' 3/8" SureSink airline per diffuser.

Robust-Aire Standard Systems

Model/ # of Diffusers	Compressor- Voltage	Max Depth	Price Post Mount Cabinet	Price Large Cabinet
Robust-Aire 1	(1) 1/4HP PN - 120V / 240V	50'	\$1,312.00	\$1,819.50
Robust-Aire 2	(1) 1/4HP PN - 120V / 240V	50'	\$1,764.50	\$2,272.50
Robust-Aire 3	(1) 1/2HP Dual PN - 120V / 240V	50'	\$2,272.50	\$2,780.50
Robust-Aire 4	(2) 1/4HP PN - 120V / 240V	50'	N/A	\$3,677.00
Robust-Aire 5	(1) 1/4HP PN & (1) 1/2HP Dual PN - 120V / 240V	50'	N/A	\$4,185.00
Robust-Aire 6	(2) 1/2HP Dual PN - 120V / 240V	50'	N/A	\$4,693.00

Standard systems include 100' per diffuser of 3/8" tubing. Additional tubing can be added for longer runs. For tubing runs over 300' 5/8" tubing should be used for the entire run.

Robust-Aire DP Systems

Model/ # of Diffusers	Compressor- Voltage	Max Depth	Price Post Mount Cabinet	Price Large Cabinet
Robust-Aire DP 2	(1) 1/2HP Dual PN - 120V / 240V	50'	\$1,898.50	\$2,406.50
Robust-Aire DP 4	(1) 1/2HP Dual PN - 120V / 240V	50'	N/A	\$3,944.50
Robust-Aire DP 5	(2) 1/2HP Dual PN - 120V / 240V	50'	N/A	\$4,319.00

DP systems include 100' per diffuser of 3/8" tubing. Additional tubing can be added for longer runs. For tubing runs over 300' 5/8" tubing should be used for the entire run.

Maximum acreage pond to be serviced by Robust Aire systems with a complete turn once every 24 hours.

System	Avg /Max Depth Ft		
	9 to 12	12 to 15	15 to 18
RA1	1	1.25	1.5
RA2	1.5	1.75	2
RA3	2.5	2.75	3
RA4	3.25	3.75	4
RA5	4.25	4.75	5.25
RA6	5	5.75	6.25
RA2DP	1.75	2	2.25
RA4DP	3.75	4.25	4.75
RA5DP	4.5	5	5.5
RA2XL	2.75	3	3
RA3XL	3.25	3.5	3.75
RA4XL	5.5	6.25	6.25
RA5XL	6	6.75	7
RA6XL	6.5	7.25	8



SureSink Weighted Airline

Additional 100' roll 3/8"	\$116.50
Additional 100' roll 5/8"	\$179.00



AquaAir Systems

AquaAir systems from AquaMaster provide superior aeration, circulation, and de-stratification. The diffusers are connected to a revolutionary cylindrical design stainless steel enclosure containing one of four compressor sizes. Each AquaAir system includes compressor(s), single membrane non-fouling dome diffuser(s), stainless steel lockable enclosure with ventilating fan and base (post mount available for AA1 and AA2). Air tubing is not included with systems and must be ordered separately.

Model/# of Diffusers	Compressor - Voltage	Pond Size	Max Depth	Price 240V	Price 120V
AquaAir 1	(1) 1/3HP PN - 120V / 240V	up to 1ac	35'	\$1,960.00	\$1,760.00
AquaAir 2	(1) 1/2HP PN - 120V / 240V	up to 2 ac	35'	\$2,690.00	\$2,450.00
AquaAir 3	(1) 3/4HP RV - 120V / 240V	up to 3 ac	16'	\$3,795.00	\$3,605.00
AquaAir 3 DW	(1) 1/3 & (1) 1/2HP PN - 120V / 240V	up to 3ac	35'	\$4,100.00	\$3,910.00
AquaAir 4	(1) 3/4HP RV - 120V / 240V	up to 4ac	16'	\$4,050.00	\$3,905.00
AquaAir 4 DW	(2) 1/2HP PN - 120V / 240V	up to 4ac	35'	\$4,365.00	\$4,180.00
AquaAir 5	(1) 1HP RV - 120V / 240V	up to 5ac	16'	\$4,735.00	\$4,545.00
AquaAir 6	(1) 1HP RV - 120V / 240V	up to 6ac	16'	\$4,980.00	\$4,885.00

DW = Deep Water System, PN = Piston Compressor, RV = Rotary Vane Compressor

1/2" Super Sink Weighted Tubing, 100' rolls

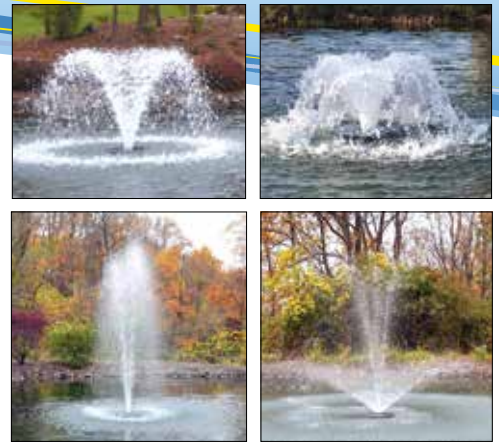
\$125.00



Fractional Aerating & Mixer Series

The 1/2 HP Fractional Series comes complete with four interchangeable spray patterns (Gemini, High Volume, Rocket, Phoenix) and a horizontal mixer. Includes assembled unit (ships as Gemini), components for all 5 systems, debris screen and mini power control panel with timer and GFCI. Covered by 2 year warranty. Power cable must be ordered separately.

	Height x Width				Volt/Phase/Amp	Price no lights	Price w/2 light set
	Gemini	High Volume	Phoenix	Rocket			
1/2 HP 115V	4'x4.5'	2'x2.5'	10.6'x10.6'	10.6'x3'	115/1/6.4	\$1,624.63	\$2,357.50
1/2 HP 230V	4'x4.5'	2'x2.5'	10.6'x10.6'	10.6'x3'	230/1/3.2	\$1,829.63	\$2,562.50



1/2 HP & 3/4 HP Classic LE Fountains

Designed for smaller ponds, these units produce the Standard pattern with no nozzle, or a nozzle can be added for a more decorative display. Includes Standard spray pattern, control panel with timer and GFI, plus cable disconnect.

	Volt/Phase/Amp	Price
1/2HP Classic LE w/50'	120/1/5.0	\$1,635.00
1/2HP Classic LE w/100'	120/1/5.0	\$1,695.00
1/2HP Classic LE w/150'	120/1/5.0	\$1,755.00
1/2HP Classic LE w/200'	120/1/5.0	\$1,975.00
3/4HP Classic LE w/50'	120/1/7.5	\$1,685.00
3/4HP Classic LE w/100'	120/1/7.5	\$1,750.00
3/4HP Classic LE w/150'	120/1/7.5	\$1,935.00
3/4HP Classic LE w/200'	120/1/7.5	\$2,035.00
Optional Crown and Geyser, Geyser, or Wide Geyser Nozzle		\$155.00 each

Height x width	Standard	Crown and Geyser	Geyser	Wide Geyser
1/2HP Classic LE	4'x16'	4'x18'	8'x2'	7'x4'
3/4HP Classic LE	6'x20'	6.5'x18'	10'x2'	10.5'x5'



Kasco Fountains

1/4 HP J Series Fountain Perfect for ponds up to 1/5 acre. Includes 50' power cable.

Fully assembled plug and go kit

		Volt/Phase/Amp	Price
KA1400JF - 1/4HP, no lights	Includes 5 spray patterns	120/1/3.1	\$964.50
KA1400JFL - 1/4HP, with LED light ring	Includes 5 spray patterns	120/1/3.1	\$1,276.50

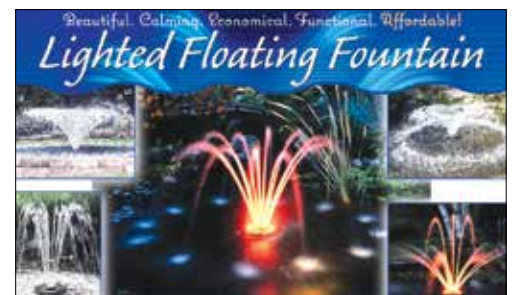
1/2 HP xStream Fountain Over 30 spray patterns included.

Fully assembled plug and go kit

	Height x Width	Volt/Phase/Amp	Price
KA2400SF/50	varies by pattern	120/1/6.6 to 7.3	\$1,424.50
KA2400SF/100	varies by pattern	120/1/6.6 to 7.3	\$1,548.50
KA2400SF/150	varies by pattern	120/1/6.6 to 7.3	\$1,951.50
KA2400SF/200	varies by pattern	120/1/6.6 to 7.3	\$2,107.50

Optional light sets available. See page 17.

150' and 200' cable include disconnect, optional on 50' and 100'.





Kasco Marine has extensive experience in the design and manufacture of fountains, circulators, and de-icing equipment. Kasco motors are designed for continuous duty with little maintenance.



4400 VX Series



Birch



Sequoia



Cypress



Linden



Willow



Juniper

VX Series Aerating Fountains Provides high oxygen transfer and flow rates with a pleasing “V” pattern. Includes 50’ power cable (100’ for 5HP), float, intake screen, and control panel with timer and GFCI protection. Additional cable is available if needed. 1/2HP - 1HP has 2 year warranty, 2HP and 5HP have 3 year warranty.

	HP	Height x Width	Volt	Phase	Amp	Price
KA2400VFX/50	1/2	3.5’ x 12’	120V	1	5.6	\$1,205.50
KA3400VFX/50	3/4	4.5’ x 15.5’	120V	1	7.3	\$1,304.50
KA3400HVFX/50	3/4	4.5’ x 15.5’	240V	1	3.7	\$2,291.50
KA4400VFX/50	1	8’ x 26’	120V	1	11.3	\$1,821.00
KA4400HVFX/50	1	8’ x 26’	240V	1	5.7	\$2,703.00
KA8400VFX/50	2	8’ x 32’	240V	1	11.0	\$3,952.50
KA5.1VFX/100 - 100’ cable	5	9’ x 34’	240V	1	20.0	\$5,507.00

2HP and 5HP also available in 3 phase. Optional light sets available, see chart below.

J Series Aerating Fountains Price includes 6 spray patterns! Includes 50’ power cable (100’ for 5HP), float, intake screen, and control panel with timer and GFCI protection. Additional cable is available if needed. 3/4HP - 1HP has 2 year warranty, 2HP, 3HP and 5HP have 3 year warranty.

	HP	Height x Width	Volt	Phase	Amp	Price
KA3400JF/50	3/4	varies by pattern	120V	1	6.5	\$1,454.00
KA3400HJF/50	3/4	varies by pattern	240V	1	2.5	\$2,507.00
KA4400JF/50	1	varies by pattern	120V	1	11.0	\$2,320.50
KA4400HJF/50	1	varies by pattern	240V	1	5.5	\$3,074.00
KA8400JF/50	2	varies by pattern	240V	1	10.0	\$4,148.50
KA3.1JF/50	3	varies by pattern	240V	1	13.4	\$4,745.50
KA5.1JF/100 - 100’ cable	5	varies by pattern	240V	1	20.0	\$5,643.50
KA7.3JF/100 - 100’ cable	7.5	varies by pattern	240V	3	20.0	\$8,110.00

2HP, 3HP and 5HP also available in 3 phase. Optional light sets available, see chart below.

Kasco Light Sets

	Description	Price
KALED3125/50	Three Light Set w/ LED lamps, 120/12V, 50’ cable, and disconnect For use on 1/2HP, 3/4HP, 1HP, 2HP, 3HP, and 5HP VFX and J series units.	\$599.50
KALED6125/50	Six Light Set w/ LED lamps, 120/12V, 50’ cable, and disconnect For use on 2HP, 3HP, and 5HP VFX and J series units.	\$1,486.50
KALR275/50	Two Light Set, 75W, 120/12V with 50’ cable (disconnect optional) For use on 1/2HP and 3/4HP VFX and J series units.	\$806.50
KALR375/50	Three Light Set, 75W, 240/12V with 50’ cable (disconnect optional) For use on 1/2HP, 3/4HP, 1HP, 2HP, 3HP, and 5HP VFX and J series units.	\$1,118.50
KALR675/50	Six Light Set, 75W, 240/12V with 50’ cable (disconnect optional) For use on 2HP, 3HP, and 5HP VFX and J series units.	\$2,436.00



Lighted Linden



LED Lights



Many more spray patterns available. Call for a full color brochure.

Includes

- 60 Hz Power Unit, Pumping Chamber (pick from selection below) and Float.
- Power Control Center with timer, surge arrestor, and GFCI (GFCI not included on 460V units).
- Cable is not included and must be ordered separately.
- Five year manufacturer's warranty.



Sunburst



Tri-Star



Phoenix



Saturn



Rocket

First Step: Pick the HP, Voltage and Phase required.

HP	Voltage	Phase	Amp Draw	Price
1 HP	115 Volt	1	14.0	\$3,879.58
1 HP	230 Volt	1	7.9	\$3,879.58
2 HP	230 Volt	1	13.2	\$4,349.08
3 HP	230 Volt	1	14.8	\$5,262.03
3 HP	230 Volt	3	9.2	\$5,262.03
3 HP	460 Volt	3	4.3	\$5,262.03
5 HP	230 Volt	1	23.0	\$5,935.38
5 HP	230 Volt	3	14.3	\$5,715.10
5 HP	460 Volt	3	7.2	\$5,715.10

Second Step: Pick the spray pattern desired.
 Sizes shown are Height x Width.

Pattern	1 HP	2 HP	3 HP	5 HP	Price 1-3HP	Price 5HP
Sunburst	4'x15'	7'x24'	10'x30'	11'x40'	\$301.00	\$491.87
Gemini	5'x10'	9'x16'	12'x24'	15'x34'	\$227.61	\$465.51
Saturn	1.5'x7'	3'x11'	4.5'x20'	5'x24'	\$266.48	\$450.52
Phoenix	8'x17'	11'x20'	15'x28'	18'x34'	\$1,096.92	\$1,096.92
Rocket	11'x5'	17'x5'	20'x8'	23'x8'	\$831.62	\$831.62
Tri-Star	8'x13'	12'x17'	16'x23'	19'x27'	\$1,120.77	\$1,120.77
Comet	9'x5'	16'x5'	19'x8'	21'x8'	\$953.99	\$953.99
Genesis	6'x24'	10'x32'	15'x50'	18'x62'	\$1,182.02	\$1,182.02
Constellation	4'x18'	6'x28'	9'x35'	10'x36'	\$1,194.80	\$1,194.80
Equinox	10'x35'	13'x40'	15'x58'	20'x72'	\$1,140.26	\$1,140.26
Omega	8'x10'	11'x16'	15'x21'	18'x22'	\$1,095.66	\$1,095.66

Third Step: Pick the size and length of cable required. Please call for assistance. Minimum cable length is 50 ft. Additional cable sold in 25 ft. increments. Price shown is per foot.

Cable	Price Per Ft.	Cable	Price Per Ft.	Cable	Price Per Ft.
12/3 (1 phase)	\$3.05	10/3 (1 phase)	\$3.16	8/3 (1 phase)	\$4.03
12/4 (3 phase)	\$3.16	10/4 (3 phase)	\$3.40	8/4 (3 phase)	\$5.17



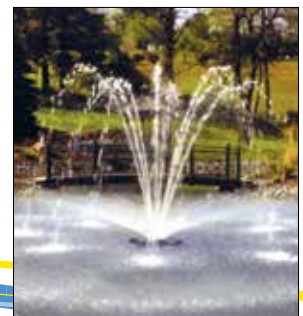
Comet



Genesis



Gemini



Constellation



Equinox



Omega

Fountain Glo Lighting

Enjoy your aerating fountain at night with the addition of Fountain Glo Lighting. High Intensity light sets include 6.5W LED lamps available in warm white or cool white. High Intensity light sets on 1HP and larger units come standard with quick disconnect and only require 16awg cable. High Voltage lights provide a spectacular nighttime display using 250 watt bulbs and can be added to any 1-5HP unit.

Each light set includes a light timer and ground fault interruption. Options include colored lenses, light sequencer, and photocell. Power cable is not included and must be ordered separately.

For 1-5 HP Units	Volt/Phase	Price
2 light High Intensity w/6.5W LED	115/1	\$1,209.85
4 light High Intensity w/6.5W LED	115/1	\$1,371.59
6 light High Intensity w/6.5W LED	115/1	\$1,722.34
8 light High Intensity w/6.5W LED	115/1	\$2,085.77
2 light High Voltage w/250W	115/1	\$1,885.54
4 light High Voltage w/250W	115/1	\$3,120.38

Provides dramatic nighttime display



High Intensity



High Voltage

Industrial Aerators

- Includes
- 60 Hz Power Unit, Pumping Chamber (pick from selection below), Float (floating units) or Bottom Barrier (sub-surface units), and Quick Disconnect
 - Aspirator Only: 2ft (floating) or 50ft (sub-surface) of 1/2 inch air tube plus float (sub-surface)
 - Fiberglass Power Control Center with timer, surge arrestor, and GFCI (GFCI not included on 460V units)
 - Cable is not included and must be ordered separately.
 - Three year manufacturers warranty.

Step One: Pick the HP, Voltage and Phase required.

HP	Voltage	Phase	Amp Draw	Price
1 HP	115V	1	13.4	\$3,873.86
1 HP	230V	1	6.8	\$3,873.86
2 HP	230V	1	11.9	\$4,378.96
3 HP	230V	1	13.5	\$4,891.21
3 HP	230V	3	8.5	\$4,891.21
3 HP	460V	3	4.2	\$4,891.21
5 HP	230V	3	14.4	\$5,366.40
5 HP	460V	5	7.5	\$5,366.40



Step Two: Pick the pattern/model desired.

Pattern/Model	Aerator Type	Price
High Volume	Floating Aerator	\$458.49
Sub-Triton Aspirator	Sub-Surface Aspirator	\$1,626.68
Triton Aspirator	Floating Aspirator	\$1,471.58
Sub-Triton Mixer	Sub-Surface Mixer	\$1,343.85
Triton Mixer	Floating Mixer	\$1,755.04

Step Three: Pick the size and length of cable required. Please call for assistance. Minimum cable length is 50'. Additional cable sold in 25' increments. Price shown is per foot.

Cable	Price Per Ft.	Cable	Price Per Ft.
12/3 (1 phase)	\$3.05	12/4 (3 phase)	\$3.16
10/3 (3 phase)	\$3.16	10/4 (3 phase)	\$3.40
8/3 (1 phase)	\$4.06	8/4 (3 phase)	\$5.17
6/3 (1 phase)	\$6.74		



Industrial Aerator High Volume





Many more spray patterns available.
Call for a full color brochure.

Includes:

- 60 Hz Power Unit, Pumping Chamber (pick from selection below) and Float.
- Power Control Center with timer, surge arrester, and GFCI. GFCI now included on all 3 phase units.
- First 50 ft. of power cable is included. Additional cable available if needed.
- 5 year warranty on 1-5 HP Master Series. 3 year warranty on 7.5 HP, and 10 HP. 3 year warranty on all electrical control panels.

First Step: Pick the Horsepower, Voltage and Phase required.

HP	Voltage	Phase	Amp Draw	Price
1/2 HP (no control panel)	120	1	5	\$2,035.00
1/2 HP (with control panel)	120	1	5	\$2,255.00
1/2 HP (with control panel)	240	1	2.5	\$2,735.00
1 HP	120	1	20.0	\$4,735.00
1 HP	208-240	1	10.0	\$4,690.00
1 HP	208-240	3	5.8	\$4,745.00
1 HP	440-480	3	2.9	\$5,355.00
2 HP	208-240	1	12.5	\$5,240.00
2 HP	208-240	3	8.0	\$5,320.00
2 HP	440-480	3	4.0	\$5,955.00
3.5 HP	208-240	1	19.0	\$5,995.00
3 HP	208-240	3	11.0	\$5,890.00
3 HP	440-480	3	5.5	\$6,575.00
5 HP	208-240	1	30.0	\$6,895.00
5 HP	208-240	3	18.0	\$6,550.00
5 HP	440-480	3	9.0	\$7,255.00
7.5 HP	220-240	1	38.0	\$12,925.00
7.5 HP	208-240	3	24.0	\$12,420.00
7.5 HP	440-480	3	12.0	\$12,430.00
10 HP	220-240	1	56.0	\$17,540.00
10 HP	208-240	3	33.5	\$13,270.00
10 HP	440-480	3	16.7	\$13,015.00



Crystal Geyser



Valhala



Double Eagle



Wide Geyser



Medinah

Second Step: Pick the spray pattern desired.
Sizes shown are Height x Width.

Masters	1/2 HP	1 HP	2 HP	3/3.5 HP	5 HP	7.5 HP	10 HP	1/2 HP Price	1-5 HP Price	7.5-10 HP Price
Lakewood Full Flow	6.5'x16'	8'x18'	10'x24'	13'x34'	15'x36'	16'x40'	16.5'x50'	\$20.00	\$20.00	\$65.00
Crystal Geyser	8.5'x20'	15'x26'	17'x30'	19'x30'	22'x32'	26'x34'	32'x34'	\$200.00	\$220.00	\$300.00
Crown & Geyser	7'x24'	6'x24'	13'x24'	15'x40'	20'x42'	27'x52'	34'x54'	\$200.00	\$220.00	\$300.00
Valhalla	8'x25'	10'x35'	12'x35'	16'x40'	18'x45'	20'x40'	28'x60'	\$235.00	\$415.00	\$585.00
Double Eagle	12'x2'	18'x5'	23'x5'	25'x5'	35'x5'	N/A	N/A	\$255.00	\$455.00	N/A
Medinah	8'x12'	9'x14'	12'x18'	14'x20'	18'x24'	20'x26'	25'x30'	\$255.00	\$435.00	\$585.00
Firestone	8.5'x14'	11'x14'	13'x14'	15'x23'	18'x28'	21'x40'	24'x65'	\$315.00	\$555.00	\$825.00

Additional Masters Series Patterns available. Please call for brochure showing all patterns. Additional power cable available if needed.



Masters Lakewood Full Flow



Crown and Geyser

AQUAMASTER FLOATING FOUNTAIN AERATORS

Masters and Classic Series Lighting Options

AquaMaster Fountains make a dramatic nighttime display with the addition of LED Night Glow Lighting. Two to eight light sets are available with 13 to 35 watt LED lamps. Colored lenses or light boards are also available.

Masters Series LED



LED Night Glow Lighting – 3 year warranty including lamps.

		Volt/Phase	Price
1/2HP Units	2 light set w/ 13 watt LED	120/1	\$920.00
	4 light set w/ 13 watt LED - minimum factory recommendation	120/1	\$1,605.00
	2 light set w/ 22 watt LED	120/1	\$1,265.00
1-5 HP Units	4 light set w/ 22 watt LED - minimum factory recommendation	120/1	\$2,370.00
	2 light set w/ 35 watt LED	120/1	\$1,400.00
	4 light set w/ 35 watt LED	120/1	\$2,615.00

Six and 8 light sets also available.

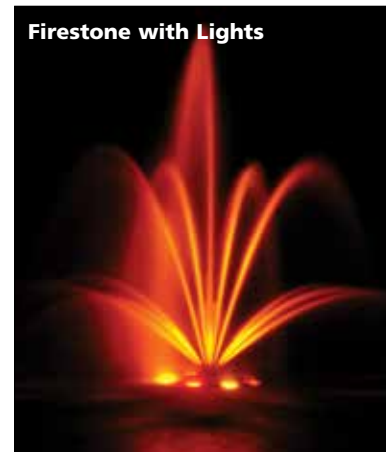
1/2HP Classic LE Lighting Options

	Volt/Phase	Price
2 light set w/ 13 watt LED w/50'	120/1	\$1,025.00
2 light set w/ 13 watt LED w/100'	120/1	\$1,125.00
2 light set w/ 13 watt LED w/150'	120/1	\$1,225.00
2 light set w/ 13 watt LED w/200'	120/1	\$1,325.00
4 light set w/ 13 watt LED w/50'	120/1	\$1,750.00
4 light set w/ 13 watt LED w/100'	120/1	\$1,850.00
4 light set w/ 13 watt LED w/150'	120/1	\$1,950.00
4 light set w/ 13 watt LED w/200'	120/1	\$2,050.00

Classic LE LED



Firestone with Lights



Horizontal Masters Series

Designed for the 1 – 5HP Masters Series Units, operates in as little as 16 inches of water, and includes large debris screen.



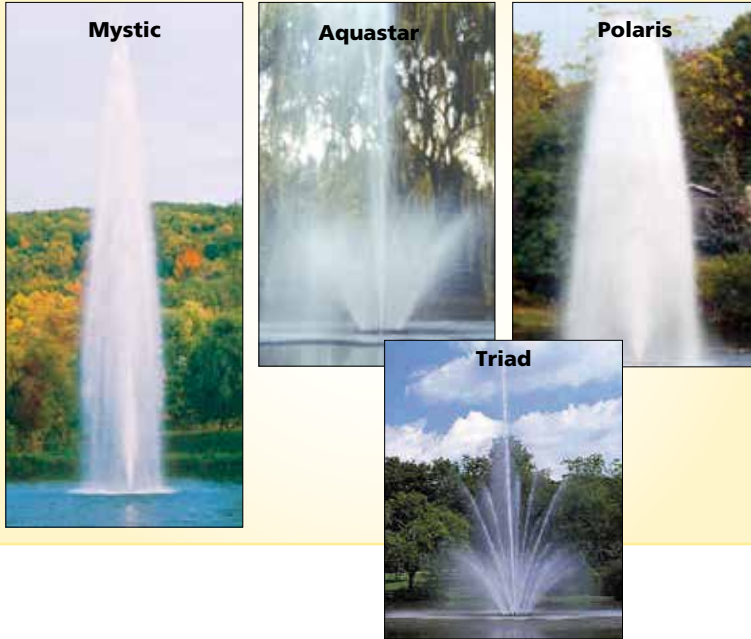
Isaiah Robbins
Seymour Office
Applicator



Danny Stinson
Kentucky Office
Applicator

Aquamaster Celestial Fountains and Otterbine Giant Fountains are available in 10 to 25 horsepower. Several spray patterns are available to produce a dazzling waterscape in larger lakes or for those looking for a more dramatic display. Optional light sets are available for all Celestial and Giant Fountain models. Contact us for a full color brochure or pricing.

Otterbine Giant Fountains



AquaMaster Celestial Fountains



Solar Aeration Systems

Product Number

Price

LLGSB1B	Solar Powered Aerator - 1 diffuser system w 1 125W solar panel and battery backup system.	\$6,535.00
LLGSB2B	Solar Powered Aerator - 2 diffuser system w 1 125W solar panel and battery backup system.	\$6,795.00
LLGSB3B	Solar Powered Aerator - 3 diffuser system w 2 125W solar panel and battery backup systems.	\$13,125.00
LLGSB4B	Solar Powered Aerator - 4 diffuser system w 3 125W solar panel and battery backup systems.	\$13,385.00

Each system comes with weather resistant cabinet, digital timer, pressure relief valve and gauge, adjustable air distribution manifold, self-cleaning membrane diffusers, and 100' of weighted airline per diffuser.



Bill Thomas
Fountain Technician



Michael Essex
Fountain Technician



Lisa Hamilton
Aeration
Customer Service

Online form available!

Name _____

Address _____

Property Address _____

City _____ State _____ Zip _____

Phone _____ Email _____

Uses of Water: Drinking Swimming Fishing Livestock Irrigation/Sprinkling

Other (explain) _____

Services Requested Do-It-Yourself Program Aeration System Design
 Vegetation Management Service Fountain Selection
 Fish Management Service

DO-IT-YOURSELF PROGRAM

Vegetation Samples

Collect samples of problem vegetation, wrap wet samples in paper towel, place different kinds of vegetation in separate plastic bags. Do not send along extra water. Identify bags with numbers and keep a record of what the numbers mean to you (i.e. What part of the lake they came from, seriousness of problem, etc.) Enclose check or money order for \$45 and send sample as soon after collection as possible.

Pond Description

Please provide a sketch of lake showing general outline, measurements including units and shade problem areas. Please mark inflow and outflow if applicable.

Pond Dimensions: _____

Max Depth _____ ft. Avg. Depth _____ ft.

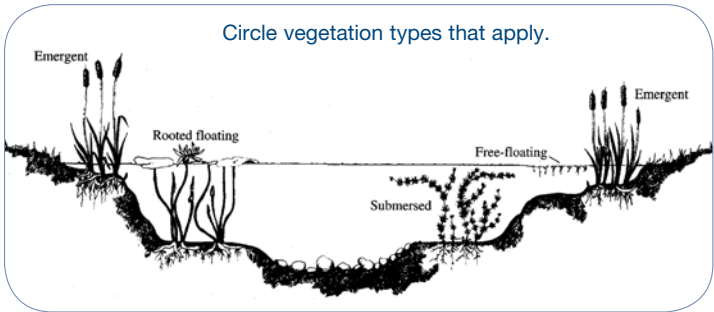
Age _____

Measurements of Problem area: _____

Depth range where problem occurs _____ ft.

Percentage of pond with problem _____

Treatment History _____



Mail Plant Samples to: Aquatic Control® Plant Sample
418 W. State Road 258
Seymour, IN 47274
Send digital pictures to: sales@aquaticcontrol.com

Ponds and lakes can be difficult and time consuming for many individuals to effectively manage. For this reason, Aquatic Control® offers a wide variety of management services. Our services include aquatic vegetation management, fish population management, aeration equipment design, installation and maintenance and any other challenge you bring to us.

Aquatic Vegetation Management

Aquatic Control® was one of the first professionally staffed companies to provide control of nuisance aquatic vegetation using products specifically registered for use in lakes and ponds. Our personnel were involved in the early field-testing and evaluation of aquatic chemicals that are now EPA registered and in common use. We continue to work closely with manufacturers, university personnel, and others involved in the production, testing and regulation of aquatic products. Only EPA registered herbicides and algaecides, or products exempt from registration, are used in our aquatic vegetation management plans.

Do-It-Yourself Programs can be developed for any pond or lake owner. We work together with you to determine the best management plan for your aquatic resource. You gather vegetation samples, collect pond measurements, describe water usages and implement the plan. We identify the type(s) of nuisance vegetation, select the appropriate solution and develop a management plan. If you live close to one of our office locations, feel free to bring a sample along. In most cases we can quickly identify the sample and send you home with a solution. You can also submit digital photos of vegetation via email to sales@aquaticcontrol.com or mail samples to us. **See page 21 for sampling instructions and pond information form.**

Aquatic Control® Vegetation Management Services provide our clients with a program tailored to their specific desires and requirements. In order to assure our clients of the best programs available, we continue to test and evaluate new equipment and techniques. Through years of experience, we have developed specific maintenance programs that have repeatedly proven to be successful under a variety of conditions. Our applicators are trained, tested and licensed to handle the specific chemicals used in our business. Aquatic Control® applicators are certified in the states of Indiana, Illinois, Kansas, Kentucky, Michigan, Missouri, Ohio and Tennessee. Maintenance of lake dye levels, emergent vegetation treatments or nutrient management can be added to either program below at the clients request. Aquatic Control® can also Custom Design a program to meet your specific needs. This may include on-call treatments, one-time weed treatments, emergent treatments etc. Feel free to contact one of our offices and we can help design a management program to meet most needs.



Clean Lake Maintenance Program This program is designed for lakes and ponds that have accumulated a great deal of nutrients. These ponds tend to grow large amounts of filamentous algae and other nuisance vegetation. This nuisance growth can be very difficult to manage. Aquatic Control® has designed the Clean Lake Maintenance Program in order to manage these complex ecosystems. The program includes inspections of the lake or pond every other week throughout the growing season. Herbicide and algaecide treatments are completed on an “as-needed” basis. Many of our clients compare the Clean Lake Maintenance Program to having a professional experienced lake management biologist on their staff, at a fraction of the cost.

Monthly Lake Maintenance Program This program was designed for the lake or pond owner that does not have a severe filamentous algae problem, but wants the assurance that a professional will be managing their lake on a once per month basis. This program is not suited for many retention ponds due to their growth potential, but more for the individual pond owner who experiences submersed vegetation problems. Additional algae treatments may be needed with this program and can be completed for additional costs.

New for 2015 – Pond Restoration Program!

Fish Population Management

Fish populations often become unbalanced due to over harvest, introduction of undesirable species, fish kills, and/or excessive weed infestations. Our years of experience, study, and a close relationship with other fisheries specialists have resulted in a variety of management techniques that can be implemented by lake or pond owners. Aquatic Control® can provide personnel and equipment for nearly every aspect of fisheries management.

A biological system, such as a lake or pond, is a complex system with many interacting factors involved in the production of a desirable fishery. Fisheries scientists have developed and adopted various types of equipment for collection of unbiased random samples of fish. Aquatic Control® biologists have modified standard sampling techniques used by governmental organizations to reduce the field and laboratory time, providing our clients a high quality yet cost effective survey. Surveys will be modified to fit the individual requirements of your lake or pond and be tailored to stay within your budget. The major sampling equipment utilized includes electrofishing boats, water quality testing equipment, sonar equipment and necessary laboratory equipment. We maintain a technical library for reference and continually integrate new methods of sampling and analysis of fish population data providing you with “state of the art” service. Survey results often save our clients money by allowing cost effective, biologically sound management procedures to be implemented. Specifications for our fisheries surveys are available upon request.

Aeration Equipment Design, Installation & Maintenance

Most Midwestern lakes and ponds thermally stratify during summer and winter months with intervening spring and fall circulation, commonly called lake turnover. During the stratified periods, oxygen demand is higher than oxygen production in deeper waters. This situation quickly leads to an oxygen reduction or complete loss of oxygen in the deeper water. This results in several problem situations in the upper layer of water including: crowding, more competition for food, extreme fluctuation in pH, oxygen, carbon dioxide, temperature and other environmental factors. This can place fish in a stress situation which results in less than optimum growth and performance. Aeration equipment provides oxygen to maintain aerobic decomposition and circulation patterns to distribute the life supporting oxygen throughout the body of water.

Aeration equipment comes in a variety of types. Each kind has its particular advantages along with some disadvantages. We offer several types of equipment and strive to fit the equipment to the client's needs and wants. You will find our diffused aeration systems on page 12. Our floating aeration systems start on page 14.



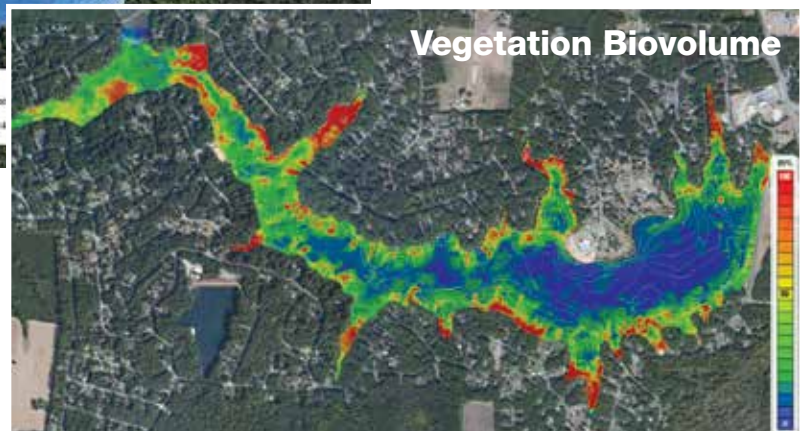
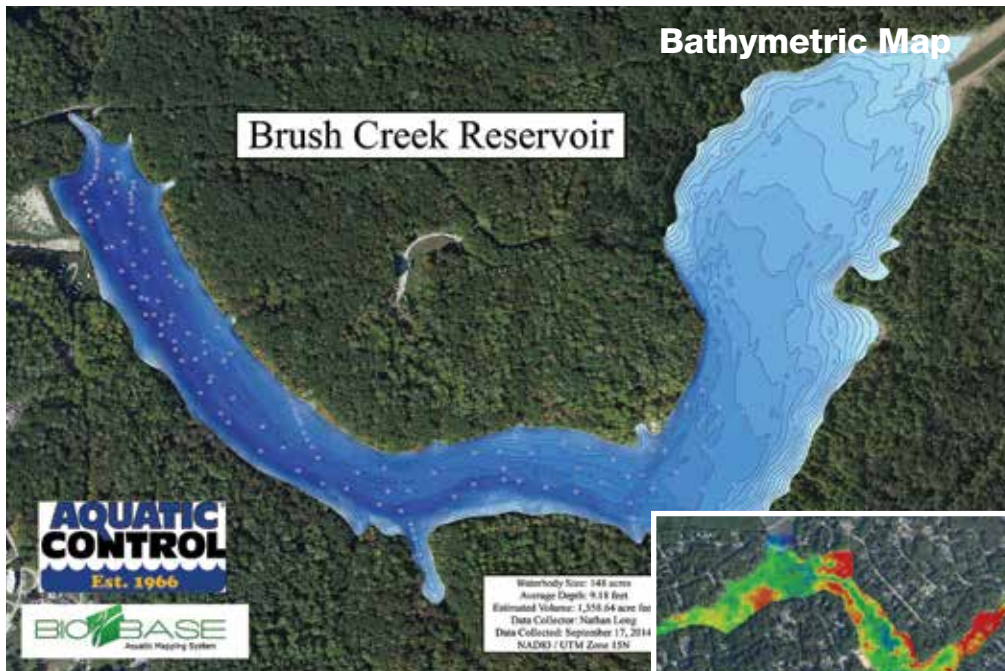
Fill out the services request form on page 21 for more information.



Let us assist you in selecting the equipment best suited for your situation.

Lake Mapping Services

We have recently upgraded our equipment, completed specialized operational training, and teamed with a company called Contour Innovations to offer affordable, comprehensive lake mapping. Lake mapping is an important tool for lake managers. Gathering baseline data such as lake depth, plant coverage, and prior to plant coverage gives our biologists more information to better achieve aquatic management goals. In addition lake mapping helps us give our clients a more detailed and comprehensive view of a waterbody that allows one to objectively determine how a lake changes over time.



Terms:

Cash, VISA, MasterCard, American Express, Discover, COD, or prior arrangements. All prices are FOB Seymour, IN unless otherwise stated. Prices are based on seasonal availability, stock on hand, and are subject to change without notice. Not responsible for typographical errors. Pictures are for illustration purposes only. All trade names and trademarks are owned by their respective holders.

Returned Merchandise:

All merchandise returned to Aquatic Control® is subject to a 15% restocking charge.

Conditions of Sale:

Pesticide sales and use are regulated by various state and federal agencies. Consult them regarding regulations and restrictions applicable to your area.

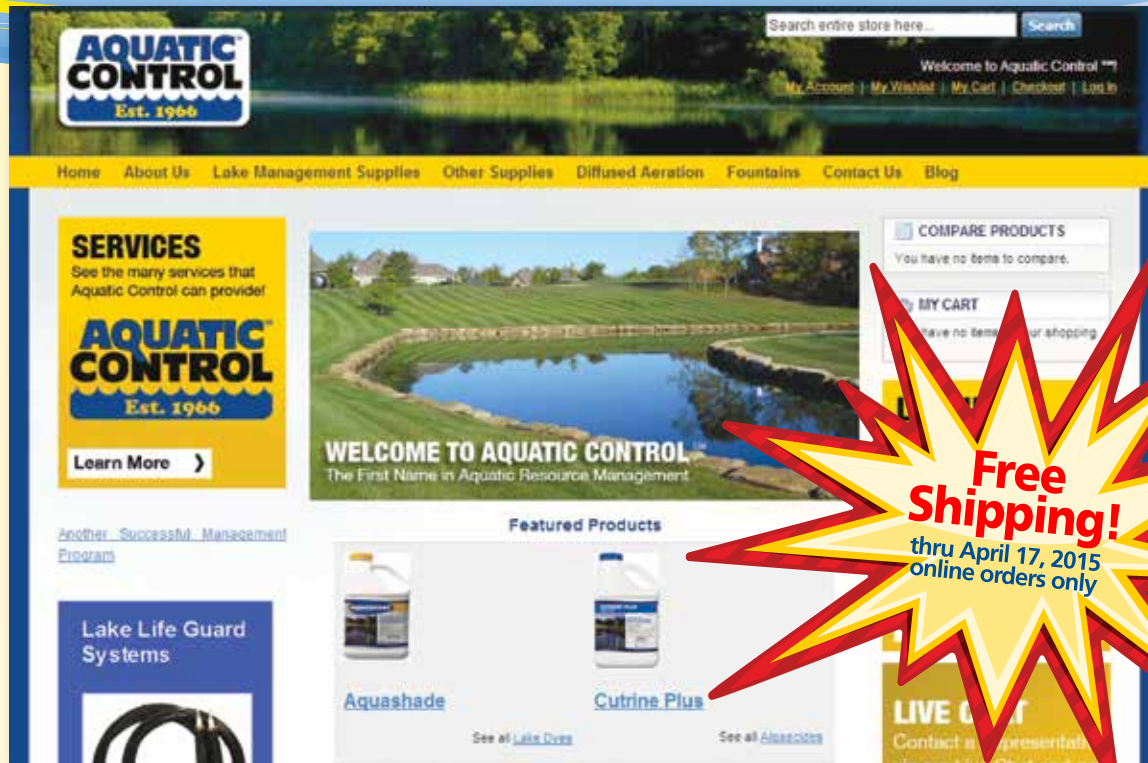
Shipments:

Shipments will be made by UPS, or Commercial Truck, whichever method is quickest, cheapest, or best. UPS will be used for most shipments. Large items or certain chemicals cannot be shipped UPS. Freight charges and COD charges will be added to your invoice. Personal Checks will not be accepted for COD charges. (Cash or money orders only.)

Commercial Truck lines are used for large items and chemicals labeled as hazardous materials. These products must be ordered in case quantities.

Due to governmental restrictions, we do not ship these products to the following states: CA, CT, ME, NY, NJ, OR & WA.

All the products you see in this retail catalog are available online at
www.aquaticcontrol.com



Check out our website www.aquaticcontrol.com for ordering and company information. All the information in this catalog is also on this website. Feel free to share this website with a friend or neighbor. Our website also includes monthly tips and reminders along with our own blog. You can order day or night or send us an email concerning any information you do not find on our website.

DID YOU KNOW?...

- Founded in 1966, Aquatic Control® was one of the first professional aquatic resource management companies in the Midwest with over 304 years experience currently on staff.
- Our staff of biologists performs fish surveys on ponds and lakes to provide input on how to improve or sustain the fish communities in the aquatic system.
- Our factory trained staff can provide professional installation and maintenance of AquaMaster, Kasco and Otterbine floating fountains or aerators.
- Our goal is to provide unmatched, professional advice and service to any pond or lake owner in the United States.

**NEW/ADDED
PRODUCT**

- AquaStrike is a dual mode of action herbicide that provides broad spectrum aquatic plant control and eliminates the need for tank mixing.
- Oasis is an innovative new mode of action in aquatic vegetation management, providing targeted hydrilla control with selectivity to many desirable species.
- GreenClean Liquid 5.0 is a professional strength formulation used to treat filamentous and planktonic algae in ponds, lakes, reservoirs, water-features and irrigation systems.

Send questions or photos to sales@aquaticcontrol.com
and our staff will review and provide professional advice.



Like us on
Facebook at
Aquatic Control, Inc.



Follow us on
Twitter at
Aquatic_Control



P.O. Box 100
Seymour, IN 47274

PRST STD
US Postage
PAID
Columbus, IN
Permit #19

Managing Aquatic Resources Since 1966

Headquarters Northern Indiana Southwest Indiana Missouri Kentucky

P.O. Box 100
Seymour, IN 47274
812.497.2410
800.753.LAKE
sales@aquaticcontrol.com

3001 Cascade Drive
Valparaiso, IN 46383
219.476.7663
866.970.LAKE
stevel@aquaticcontrol.com

2447 Locust Creek Drive
Evansville, IN 47720
812.402.1001
800.276.6254
patrickw@aquaticcontrol.com

2500 S. Spoede Lane
Truesdale, MO 63380
636.456.7008
800.568.LAKE
mikew@aquaticcontrol.com

505 Assembly Drive
Suite 108
Elizabethtown, KY 42701
270.769.0200
800.753.LAKE
adamc@aquaticcontrol.com



Seymour, IN



Valparaiso, IN



Evansville, IN



Truesdale, MO



Elizabethtown, KY